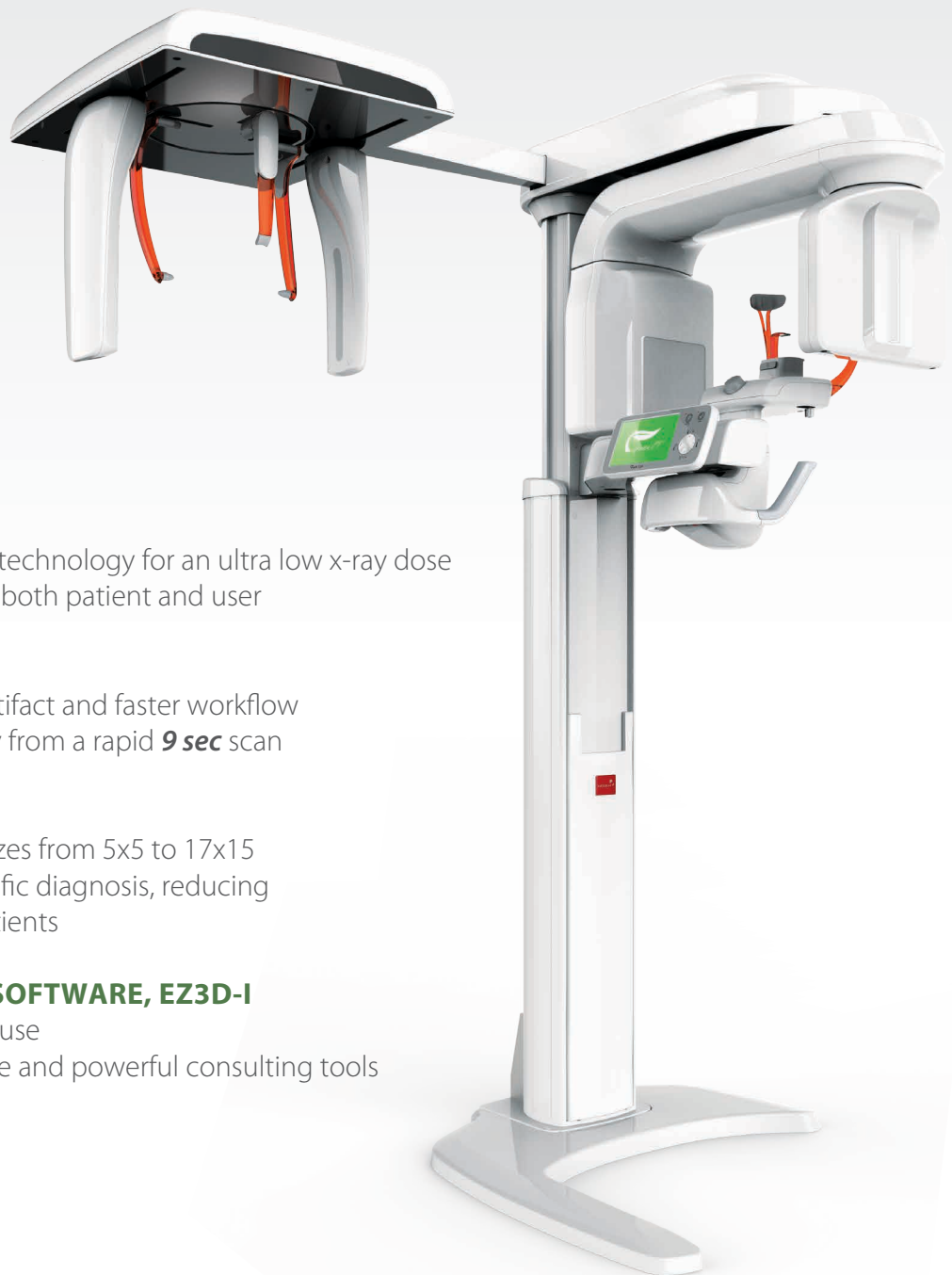


# THE NEW DIGITAL ENVIRONMENT

## PaX-i3D Green<sup>TM</sup>



### **GREEN CBCT**

- VATECH's innovative technology for an ultra low x-ray dose
- Green CBCT protects both patient and user

### **RAPID SCAN**

- Minimized motion artifact and faster workflow
- Superb image quality from a rapid **9 sec** scan

### **MULTI FOV SIZES**

- Wide range of FOV sizes from 5x5 to 17x15
- Optimal size for specific diagnosis, reducing x-ray exposure to patients

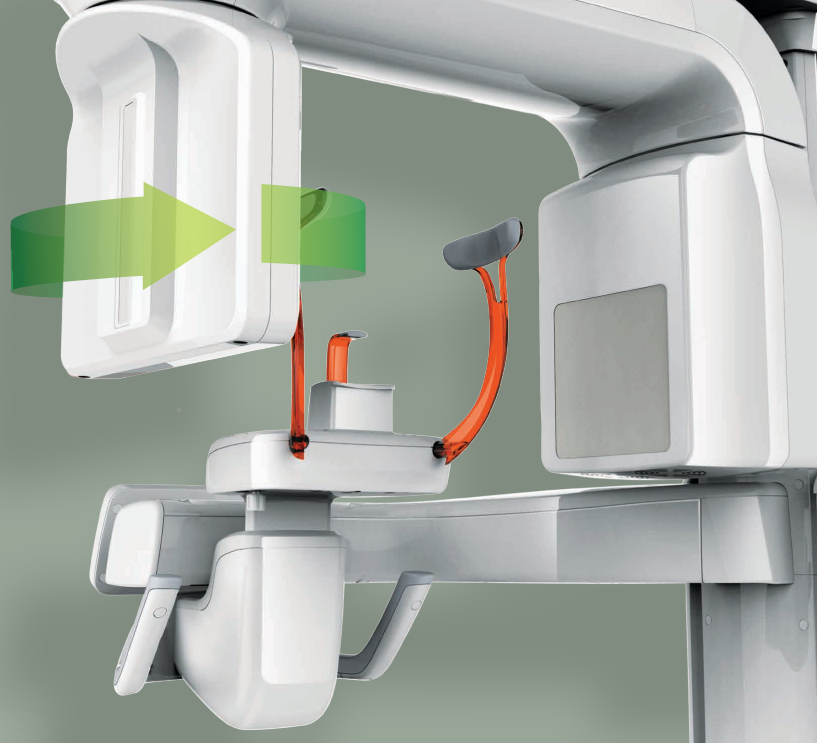
### **EASY AND SIMPLE SOFTWARE, EZ3D-I**

- Easy to learn, easy to use
- Intuitive user interface and powerful consulting tools



#### PATENTED AUTO-SWITCHING TECHNOLOGY

The Green CT offers convenient and safe 'Patented Auto-Switching Technology' system, that switches between CBCT and Panoramic sensors. This smart system conveniently prevents sensor damage from accidental dropping.



## PROFESSIONAL DIAGNOSTIC VALUE WITH 3D IMAGES

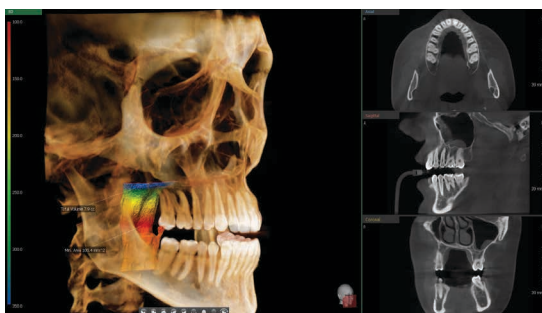
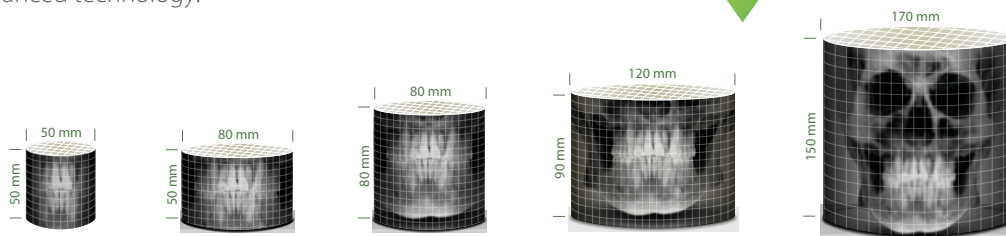
### WIDE RANGE OF DIAGNOSIS WITH MULTI FOV SELECTION

With expanded FOV sizes, the Green CT offers valuable diagnostic tools for clinicians.

## Clinical Care with GREEN INNOVATION

The PaX-i3D Green produces superb diagnostic images, which will be a source of pride for any dental practice, and improves treatment planning and safety for your patients.

Experience excellent image quality with Vatech's advanced technology.



## FOV 17x15

17x15 images from the PaX-i3D Green enable you to do a comprehensive diagnosis including oral and maxillofacial surgery. This perfect FOV size will be helpful for complex orthognathic, implant, and orthodontic surgery.

# PROFESSIONAL DIAGNOSTIC VALUE WITH CEPHALOMETRIC IMAGES

EXTENDED DIAGNOSTIC VALUE FOR WIDE INSIGHT

## CEPHALOMETRIC (SCAN TYPE)

The PaX-i3D Green provides optimal images with an exclusively designed sensor for cephalometric diagnosis. As it offers two image sizes, LAT and Full LAT, you can choose one of them based on the purposes of your diagnostic needs.

### Built-in Sensor System

The PaX-i3D Green enables you to acquire high quality images in a safe and comfortable environment. Best of all, you don't need to waste time or risk damage by changing sensors.



LATERAL

Provides specialized high quality images to suit orthodontics and maxillofacial surgeries.



FULL LATERAL

A full lateral image size is 30% wider and shows the occipital area of the patient, which enables comprehensive diagnosis.

EXAMINATION PROGRAM	SCAN TIME	IMAGE SIZE
LATERAL	3.9 sec	21x23 cm (8.3"x9.1")
FULL LATERAL	16.9 sec	27x23 cm (10.6"x9.1")



### ONE SHOT CEPH

With One Shot Ceph, you can acquire high quality images with low x-ray dosage. Plus, short scan time markedly reduces motion artifacts.

## CEPHALOMETRIC (ONE SHOT TYPE)

Superior image quality is delivered using highly advanced a-Si TFT Sensors. Three different ceph image sizes reduce unnecessary x-ray dosage and scans the ideal area of cranial anatomy for your diagnosis and treatment planning.

**SMALL** 20x20 cm (8"x8")



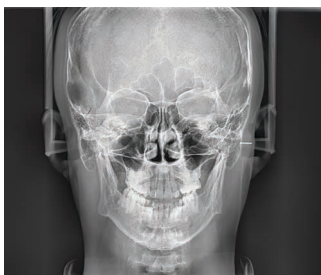
**MEDIUM** 23x25 cm (9"x10")



**LARGE** 30x25 cm (12"x10")



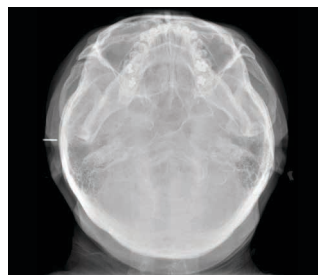
**PA**



**Carpus**



**SMV(Submentovertex)**



OP (One Shot Premium) →

## PRODUCT CONFIGURATION

	CBCT	PANO	CEPH	
			SCAN	ONE SHOT
PaX-i3D Green	•	•	—	—
PaX-i3D Green SC	•	•	•	—
PaX-i3D Green OP	•	•	—	•

## SPECIFICATIONS (PaX-i3D Green : **PHT-60CFO**)

Function	Pano + CBCT + Ceph		SC	21 cm x 23 cm [LAT, PA, SMV, Waters View, Carpus] 27 cm x 23 cm [Full LAT]
CT - FOV Size	17x15 cm : Multi [5x5 / 8x5 / 8x8 / 12x9 / 17x15 cm]		Ceph FOV Size	OP 20.3 cm x 20.3 cm [LAT, PA] 22.9 cm x 25.4 cm [LAT, PA] 30.4 cm x 20.3 cm [LAT, PA, SMV, Waters View, Carpus]
Voxel Size	5x5 cm : 0.08 mm / 0.2 mm 8x8, 12x9 cm : 0.2 mm / 0.3 mm 17x15 cm : 0.25 mm / 0.3 mm		Gray Scale	14 bit
Scan Time	Pano : 10.1 sec Scan Ceph : 3.9 sec One Shot Ceph : 0.9 - 1.2 sec CBCT : 9 sec / 15 sec		Patient Position	Standing / Wheelchair Accessible
			Tube Voltage/ Current	50-100 kVp(1 kV step) / 4-16 mA(0.1 mA step)

## DIMENSIONS [Unit: mm]

### PaX-i3D Green

Pano / CBCT

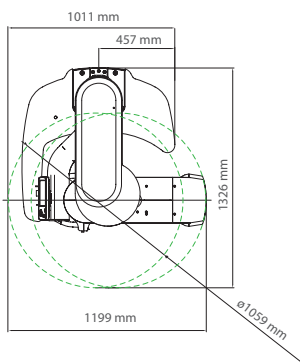
### PaX-i3D Green SC

Pano / CBCT / Scan Ceph

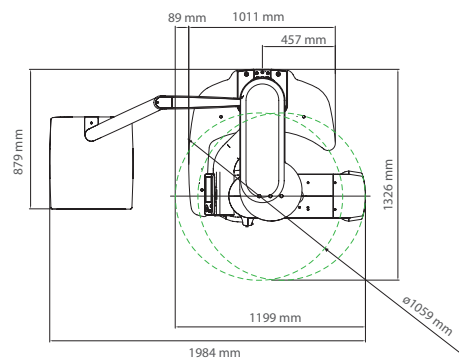
### PaX-i3D Green OP

Pano / CBCT / One Shot Ceph

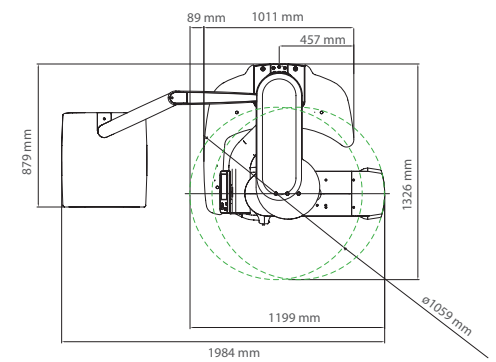
#### TOP VIEW



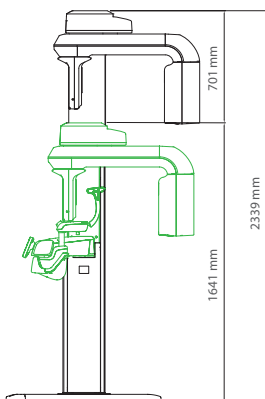
#### TOP VIEW



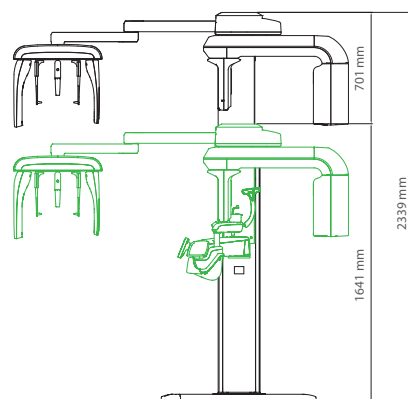
#### TOP VIEW



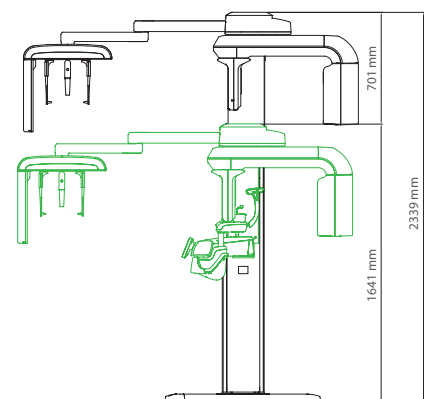
#### FRONT VIEW



#### FRONT VIEW



#### FRONT VIEW



**\* An additional 7.5 inches (191 mm) of space is required behind the unit for wall mount bracket installation (mandatory unless there is a base mount installation).**