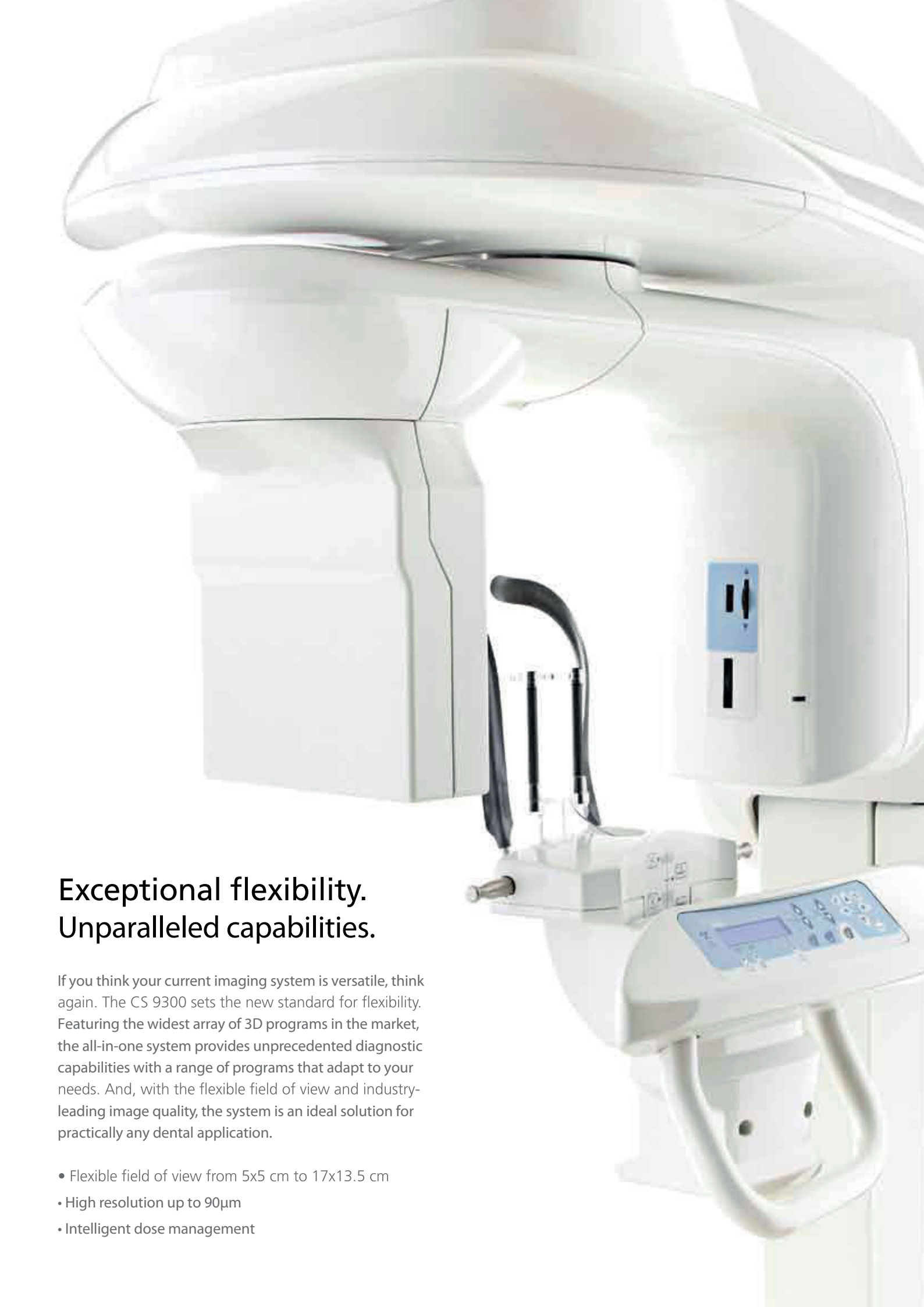


CS 9300



Introducing the All-in-One CS 9300.
True versatility. Infinite possibilities.




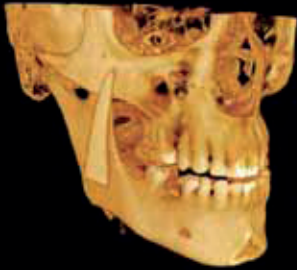

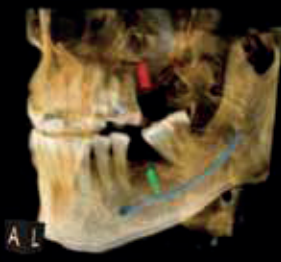




Exceptional flexibility. Unparalleled capabilities.

If you think your current imaging system is versatile, think again. The CS 9300 sets the new standard for flexibility. Featuring the widest array of 3D programs in the market, the all-in-one system provides unprecedented diagnostic capabilities with a range of programs that adapt to your needs. And, with the flexible field of view and industry-leading image quality, the system is an ideal solution for practically any dental application.

- Flexible field of view from 5x5 cm to 17x13.5 cm
- High resolution up to 90µm
- Intelligent dose management

Unlimited options. Absolute precision.

From exceptionally detailed focused-field images to larger maxillofacial views, the CS 9300 delivers vivid, true-to-life 3D renderings to help you diagnose more accurately than ever. Just select the appropriate program, and the unit automatically adjusts field of view, resolution, and position as needed.

Examples of field of view and recommended applications		
		<p>Field of view: 17 x 13.5 cm / 17 x 11 cm / 17 x 6 cm</p> <p>Orthodontics, complex treatment planning, sinus and airway analyses, orthognathic surgery, facial reconstruction, traumas, double TMJ assessments</p>
		<p>Field of view: 10 x 10 cm / 8 x 8 cm</p> <p>Implantology, complex impactions, and other cases involving both dental arches, single TMJ assessments</p>
		<p>Field of view : 10 x 5 cm</p> <p>Implantology, impactions, and other cases involving one dental arch</p>
		<p>Field of view: 5 x 5 cm</p> <p>Endodontics, single implants, impactions, local exams, TAD planning, incisor bone assessments, and similar applications requiring a high level of detail (90µm)</p>

3 essential technologies.

1 extraordinary system.

Imagine being able to perform all of your exams with one system. With the CS 9300, that dream is now a reality. Combining medium-field CBCT technology with dedicated panoramic imaging, the system delivers best-in-class images each time it's used.

- Panoramic, cephalometric,* and 3D imaging in one solution
- Collimation limits exposure to area of interest
- Delivers 75-90% lower radiation dose than conventional CT units
- 3D images ensure maximum precision, providing 1:1 accuracy of patient anatomy
- One-shot cephalometric* technology captures images in less than a second

The best images. The best diagnoses.

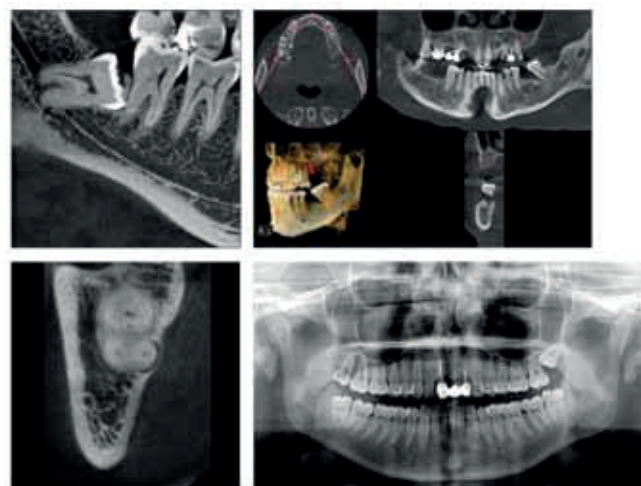
Regardless of which modality you use, the CS 9300 delivers the highest image quality in the industry, giving you the precise visual evidence you need to diagnose more effectively than ever before.

- Widest scope of clinical applications
- Advanced imaging technology ensures best possible image quality
- Fast scan time minimizes patient motion and reduces risk of retakes
- Focal trough adapts to patient's jaw morphology to deliver optimal pan images

Maximum usability. Accommodating to all.

Despite all its features, the CS 9300 is remarkably easy to use. Preset programs automatically adjust exposure settings and collimation based on the program you select, while the intuitive user interface makes exams faster and easier than ever. Just select the program and the unit automatically scans the appropriate region of interest.

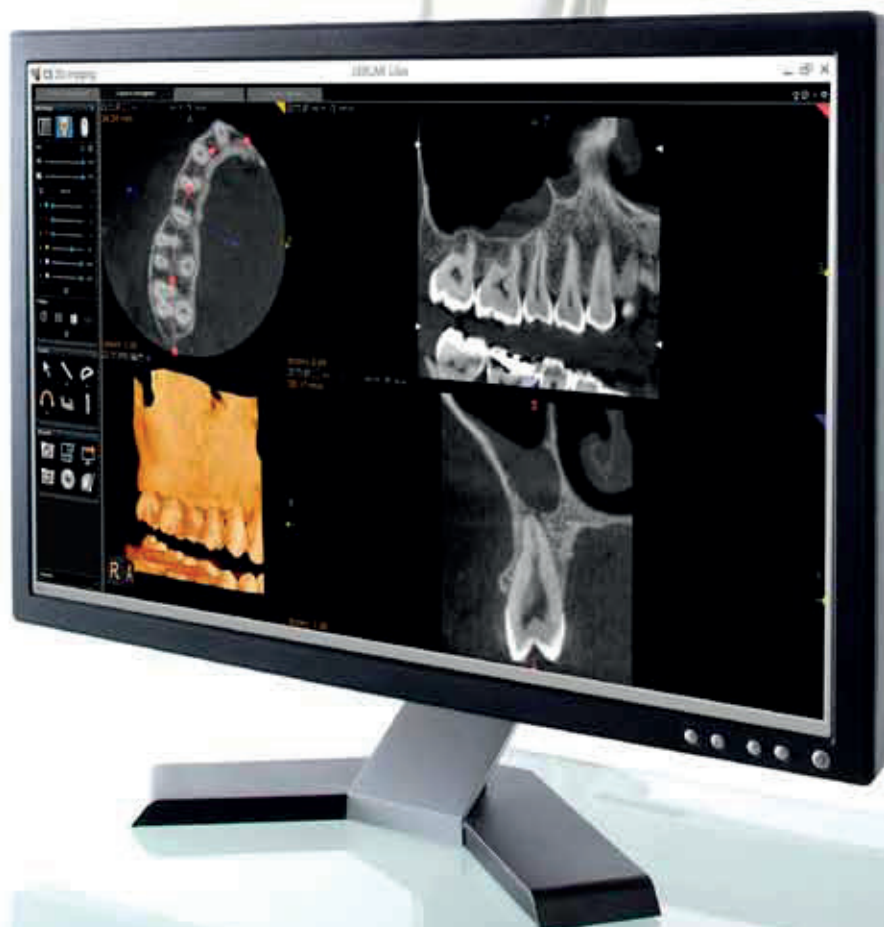
- Convenient face-to-face patient positioning
- Easily accessible for all patient sizes and wheelchairs
- Fully motorized movement for maximum ease of use
- Immediate access to images saves time and improves productivity



Simple software. Sophisticated features.

Easily access, review, and share your 2D and three-dimensional images when and where you need them. Our comprehensive 3D imaging software features everything you need to work more efficiently and get the most out of your CS 9300.

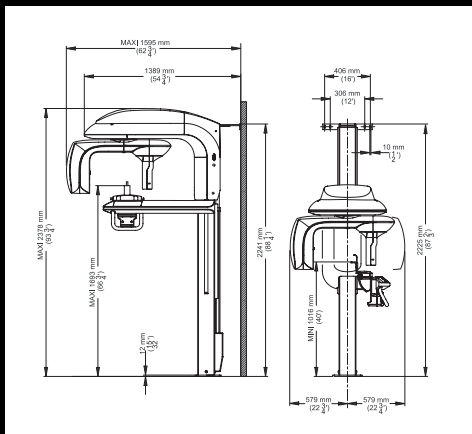
- Intuitive and feature-rich 3D imaging software, including implant planning library
- DICOM file format provides portability and compatibility with third-party software, including Simplant®, NobelGuide™, and SureSmile.
- Integrates seamlessly with our other digital imaging solutions
- Easy image sharing for better communication with referrals and patients



Technical Specifications

Cone Beam CT Specifications		Other Specifications	
Sensor type:	flat panel	Exposure times:	panoramic: 4 to 16 seconds, cephalometric: 0.1-3.2 seconds
Focal spot size:	0.7mm	Tube voltage:	60-90kV
Scan mode:	continuous and pulse	Tube current:	2-15mA
CBCT scanning time:	12-20 seconds, 28 seconds in pulse mode	Input voltage (AC):	230/240 V, 50/60 Hz
Voxel size (µm):	90 to 500	Weight:	160 kilograms (353 pounds), with cephalometric module: 199 kilograms (438 pounds)
Field of view:	5 x 5 cm, 10 x 5 cm, 8 x 8 cm, 10 x 10 cm, 17 x 6 cm, 17 x 11 cm and 17 x 13.5 cm	Footprint:	120 x 160 cm (45.5 x 62.8 inches), with cephalometric module: 215 x 160cm (84.6 x 62.8 inches)
Voxel shape	isotropic (same in all three dimensions)		
Reconstruction time:	Less than 2 minutes		

Warning: Class 2 laser product. Do not stare into the beam.



Would you like to know more?

Visit www.carestreamdental.com

Want to subscribe to our newsletter?

E-mail to dentalnews@carestream.com.



Postadres: Postbus 273

3300 AG Dordrecht

Bezoekadres: Wieldrechtseweg 26

3316 BG Dordrecht

Tel.: 078 - 654 37 37

Fax.: 078 - 654 37 30

E-mail: info@dentair.nl